

## INSIDE THIS ISSUE

**JANUARY 2010**

Page	
Cover	1
Down Under Institute	2
Living Real Lives	3
2010 Futures Expo	4
Smoke Alarm Rebate	5
Disabled Surfers	6 & 7
Parent to Parent Cairns	8
The Hub – Gladstone	9
Ozmates Travel	10
File it & Contacts	11

### PARENT TO PARENT

Association Queensland Incorporated

Cnr Nambour Connection & Ayrshire Roads  
Kulangoor via Yandina  
Phone: (07) 5472 7072  
Free Call: 1800 777 723  
Fax: (07) 5472 7073  
Email: [parent@parent2parentqld.org.au](mailto:parent@parent2parentqld.org.au)

### Board of Management:

President: Judy Young  
Vice President: Loretta Kreet  
Secretary/Treasurer: Jan Bell  
Members: Sue Campbell, Lesley Turner

### State Centre Staff

Julie Simpson	Annette Mayer
Jodi Wolthers	Kim Henneker
Mary Postma	Diane Montgomery
Lisa Wells	Carol Thorne

### D.A.D. S

Graham Mayer

We have special networks across  
Queensland: see back page for details

This newsletter is provided as an information  
service to our members. Comments are  
welcomed.



Welcome to the first Newsletter for 2010.

We hope everybody enjoyed their Christmas & are  
looking forward to a fantastic new year.

We are looking forward to another busy year which  
includes five Person Centred Thinking Workshops  
before May, we also have other workshops available.

Communication and Supporting Skills - This course  
is helpful to parents who may be just beginning their  
journey, or to those who are further along their  
disability experience. Parents' who have attended,  
report that they feel more confident and make more  
informed decision on behalf of their son or daughter.

Essential Lifestyle Planning is a plan to support an  
individual based on what is important to them on a  
day to day basis.

Parent to Parent are honoured to be part of the first  
Down Under Institute ever held in Australia at  
Lismore in April.

*The views expressed in this newsletter are not  
necessarily those of Parent to Parent Association  
Qld Inc.*

**Down Under Institute**  
**11-15 April 2010**  
**Lismore NSW Australia**  
296 Molesworth Street, Lismore NSW 2480



Following on from the successful Down Under Institute held in Hamilton New Zealand in 2009 the Down Under Institute travels for the first time to Australia in 2010.

The website [www.dui2010.org.au](http://www.dui2010.org.au) provides various information and details including:

- registration for the Down Under Institute in 2010 in Lismore, NSW, Australia
- information on the presenters at the Institute
- information on the Institute, its history and aims
- information on how to get to Lismore, where to stay and what to do

If you have any enquiries please send an email to -  
[enquiries@dui2010.org.au](mailto:enquiries@dui2010.org.au)

# Living Real Lives

Community Resource Unit (CRU) in association with Dept of Communities – Disability Services will present a series of 3 day workshops for people with disability, family members, government and non–government service providers, support staff and interested community members through Queensland in 2010.

## Living Real Lives in the Community

**What does it take and what get in the way for people who live with disability?**

Presented by

*Dr Michael J Kendrick*



<b>Toowoomba</b>	<b>23<sup>rd</sup> – 25<sup>th</sup> February</b>
<b>Sunshine Coast</b>	<b>1<sup>st</sup> – 3<sup>rd</sup> March</b>
<b>Rockhampton</b>	<b>8<sup>th</sup> – 10<sup>th</sup> March</b>
<b>Mt Isa</b>	<b>28<sup>th</sup> – 30<sup>th</sup> April</b>
<b>Townsville</b>	<b>4<sup>th</sup> – 6<sup>th</sup> May</b>
<b>Brisbane</b>	<b>12<sup>th</sup> – 14<sup>th</sup> May</b>

Over the three days Dr Kendrick will explore the key dimensions of supporting personal lifestyle development. Topics covered will include the importance of understanding the person, their unique needs, strengths and capabilities. “Imagining better” what might be possible for the person will be addressed and then how formal services and informal supports need to work together in right relationship to bring those dreams to reality. The importance of recognising, developing and mobilising informal and natural supports and resources will be explored along with the importance of intentionally safeguarding the person’s vulnerabilities.

If you require information in the meantime phone Kym McCallum at CRU on 3211 5700 or email [kymmccallum@cru.org.au](mailto:kymmccallum@cru.org.au)

Gympie State High School presents  
The  
**2010 FUTURES EXPO**

**What's out there! & Where to next?  
Planning a positive pathway for our  
Students with Disabilities**

**Thursday 25th March**

- Keep this date free for this important event
- Start planning your presentations now
- Bookings will be taken early in the new school year to secure your spot for the day



**Who for?**

- Parents/Carers of children with disabilities
- All students with disabilities - Prep, Primary and Secondary
- Teachers
- Support workers
- Interested community members



**Where?**

Gympie State High School  
More details to come early next year  
Thanks, we hope to see you there.  
For further information contact  
Rosemary Horn Phone: 07 54898367  
Email: [rhorn12@eq.edu.au](mailto:rhorn12@eq.edu.au)

# Smoke Alarm Rebate Scheme

Rebates of up to \$400 are available for eligible deaf or hearing-impaired people to help pay for smoke alarms designed to meet their needs by featuring a strobe and/or acoustic warning as well as a vibrating pad.

For more information visit [www.fire.qld.gov.au](http://www.fire.qld.gov.au) to find a self check list and application form, fact sheets on the types of alarms available and a list of suppliers and retailers.



**TO CUT DOWN ON EXPENSE AND MAKE FOR EASIER DELIVERY, PLEASE LET US KNOW IF YOU WOULD LIKE TO RECEIVE YOUR CHAT ABOUT NEWSLETTER BY EMAIL.**

# "Sunshine Coast Branch"



## "LETS GO SURFING DAY"

**WHEN:** Saturday 13th March 2010

**WHERE:** Noosa GroyneWall

Volunteers to sign in 8.30am

Participants & Carers to sign in 9am - 9.30am

**TIME:** Surfing from 10.00am - 1.00pm

**With Awards & Sausage Sizzle after Event**

\$10.00 for non member participants.

**BOOKINGS ESSENTIAL FOR PARTICIPANTS**

**Members/Carers/Volunteers Free**

**Ph. Sharon 07 54480272 or Ian 0409509199**

**Website: [disabledsurfers.org](http://disabledsurfers.org)**

Please find below a list of other venues and dates which you are able to attend if you are in the area:

<b>Central Coast</b> 2010	<b>Hunter Region</b> 16 <sup>th</sup> January 2010 20 <sup>th</sup> March 2010	<b>Sunshine Coast</b> 13 <sup>th</sup> March 2010
<b>Far North Coast</b> 16 <sup>th</sup> January 2010 21 <sup>st</sup> February 2010 4 <sup>th</sup> April 2010	<b>Mid North Coast</b> 9 <sup>th</sup> January 2010 6 <sup>th</sup> March 2010	<del><b>Sydney Region</b></del> 27 <sup>th</sup> February 2010
<b>Gold Coast</b> 21 <sup>st</sup> February 2010 21 <sup>st</sup> March 2010	<b>National - AGM</b> September 2010	<b>Victoria</b> 9 <sup>th</sup> January 2010 27 <sup>th</sup> February 2010
<b>Hastings Region</b> 17 <sup>th</sup> January 2010 21 <sup>st</sup> February 2010 21 <sup>st</sup> March 2010 18 <sup>th</sup> April 2010	<b>South Australia</b> 28 <sup>th</sup> February 2010 28 <sup>th</sup> March 2010	<b>Western Australia</b> 16 <sup>th</sup> January 2010 6 <sup>th</sup> February 2010 13 <sup>th</sup> March 2010
	<b>South Coast</b> 21 <sup>st</sup> March 2010 6 <sup>th</sup> November 2010 4 <sup>th</sup> December 2010	<b>Dunsbrough WA</b> 9 <sup>th</sup> January 2010 20 <sup>th</sup> February 2010
		<b>New Zealand</b> 23 <sup>rd</sup> January 2010 6 <sup>th</sup> March 2010



## Parent to Parent - Cairns

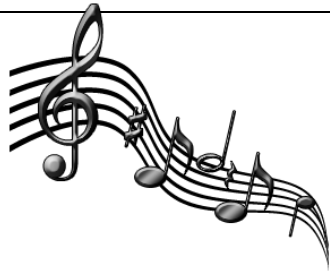
Parent to Parent are pleased to announce the opening of Cairns and Tableland district, the contact person for this area is Sharon Long.



We would like to welcome Sharon to Parent to Parent the phone details for Sharon is located on the last page under Local Group and Community Contact Details

These photos were from a 2 day Person Centred Thinking Workshop of which there were 18 participants which was held in Cairns the last week of October 2009.





## The Hub - Gladstone

A **VISION** for a regional place to promote social inclusion for people with a disability is now up and running.

This initiative arose from community consultations with Disability Services throughout 2008 who identified the unmet needs in Gladstone and surrounding areas.

The Hub will be run as a community centre and have a variety of functions including being the regional centre for Parent to Parent Association Queensland. It will support the participation and contribution of people with a disability in the local community.

In February there will be a variety of activities starting, which hopefully will be well received by the community.

The official opening of the Hub will be held on **Saturday 13<sup>th</sup> March, from 10am - 2pm at 5 Buller Street, South Gladstone, Queensland**, the plans for the day are displays of community activities, market stalls, food, music and not forgetting the grand tour of "The Hub" and it's official opening.



Contact details:

Phone: 07 4979 2777

Email: [p2pgladstonehub@bigpond.com.au](mailto:p2pgladstonehub@bigpond.com.au)



# Ozmates Travel: the Specialists in Disability Travel

Since 1995 Ozmates Travel has been taking adults with a disability to some of the most exciting places within Australia and overseas. With our energetic, lively and caring support crew our ability to ensure a fun filled holiday is all but guaranteed.

We provide caring qualified staff to cater for needs of our passengers and are very proud of the quality and accessibility of our holidays.

We use luxury coaches on our holidays and believe that nothing is too good for our passengers, so therefore our holiday packages are motel accommodated visiting restaurants for most meals. Each of our holidays has an itinerary and is set around a flexible timetable.

If you would like to know more, please don't hesitate to contact one of our friendly caring & courteous travel consultants who can assist you in creating your own personalized holidays or even join one of our tours.

Website: [www.disabilitytravel.com.au](http://www.disabilitytravel.com.au)



# File it and Find it



Disabled Surfers Assoc of Australia Inc.	<a href="http://www.disabledsurfers.org">www.disabledsurfers.org</a>
CRU (Community Resource unit)	<a href="http://www.cru.org.au">www.cru.org.au</a>
Down Under Institute	<a href="http://www.dui2010.org.au">www.dui2010.org.au</a>
Ozmates Travel	<a href="http://www.disabilitytravel.com.au">www.disabilitytravel.com.au</a>
Northcott Disability Services Autism support line 1800 004957	<a href="http://www.facebook.com/l:www.northcott.com.au">www.facebook.com/l:www.northcott.com.au</a>
Education guide for parent with children with a disability	<a href="http://www.education.qld.gov.au">www.education.qld.gov.au</a>
Medical Aid Subsidy Scheme	<a href="http://www.health.qld.gov.au/mass">www.health.qld.gov.au/mass</a>

## Local Group and Community Contact Details

<b><u>Brisbane:</u></b> Kerri Vidler	<b><u>Fraser Coast:</u></b> Sue Campbell Ph. 0422 045 290	<b><u>Mackay:</u></b> To be advised.
<b><u>Sunshine Coast</u></b> Carol Thorne Ph. 5472 7072	<b><u>Gladstone:</u></b> Susie Lawler Ph. 4979 2777	<b><u>Toowoomba:</u></b> Annette Mayer Ph. 0412 507 263
<b><u>Caboolture:</u></b> Robyne Allsworth Ph. 5432 3222	<b><u>Gold Coast:</u></b> Wendy Chandler Ph. 0417 787 646	<b><u>Charleville:</u></b> Kerrye Parry Ph. 4654 3500
<b><u>Gympie:</u></b> Belinda McAuliffe Ph. 0401 768 040	<b><u>D.A.D.S:</u></b> Graham Mayer Ph. 0412 678 125	<b><u>Cairns</u></b> Sharon Long Ph. 0428 966 290

**State Centre:**  
**PHONE: 07 5472 7072 or 1800 777 723**  
**FAX: 07 5472 7073**  
**EMAIL: [info@parent2parentqld.org.au](mailto:info@parent2parentqld.org.au)**  
**WEBSITE: [www.parent2parentqld.org.au](http://www.parent2parentqld.org.au)**